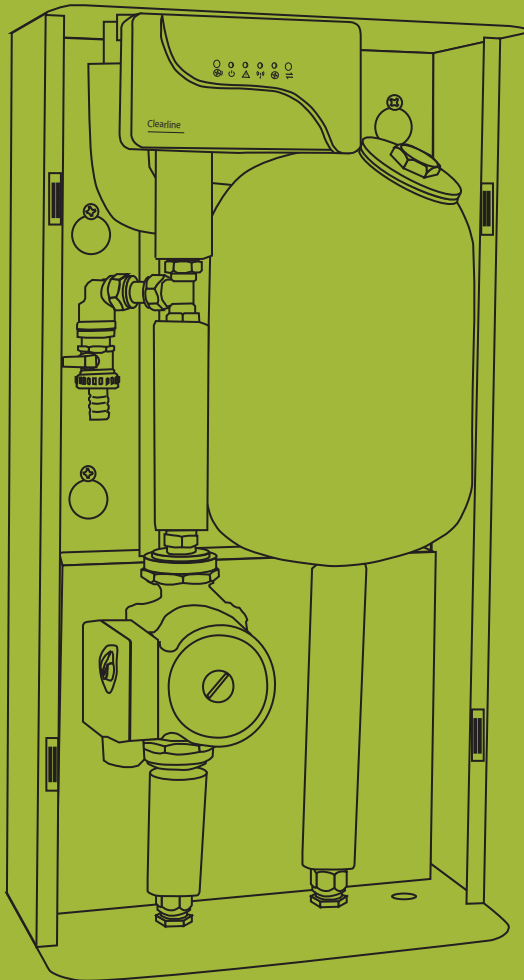
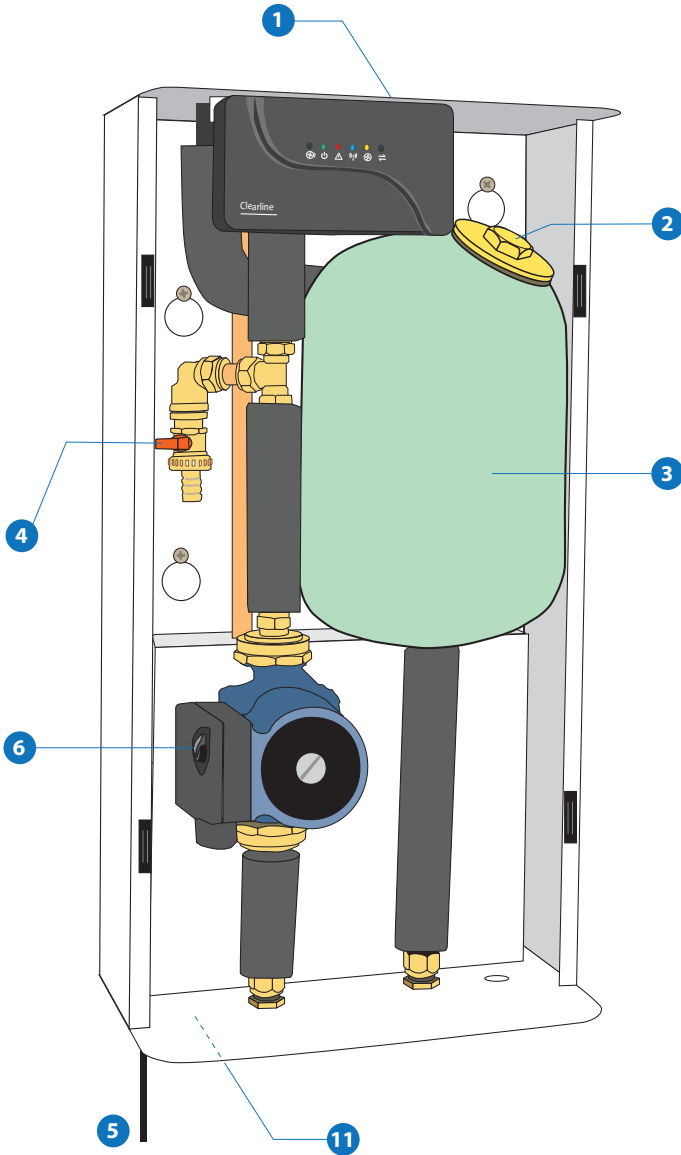


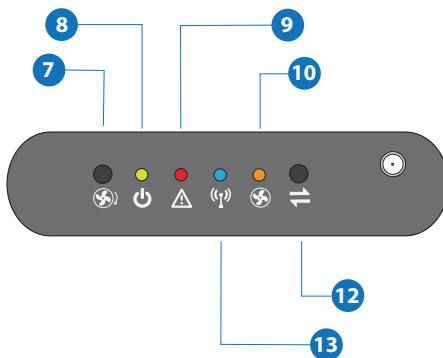
Commissioning Manual





Key

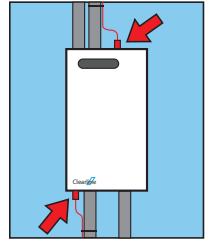
No.	Description
1	Panel sensor cable socket
2	Drainback vessel cap
3	Drainback vessel
4	Fill level valve
5	Power cable
6	Pump speed selector
7	Pump test button
8	Power indicator light
9	Error indicator light
10	Pump indicator light
11	Cylinder sensor cable socket
12	Connect with Clearline Aura - available separately
13	Wi-fi activity light



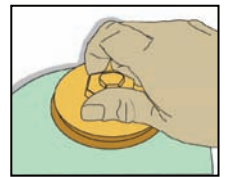
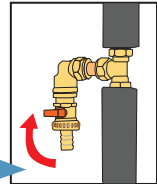
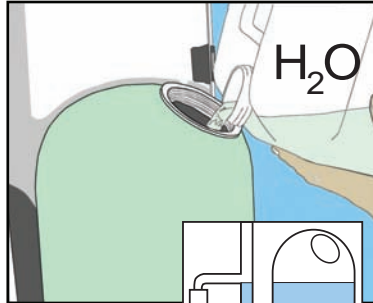
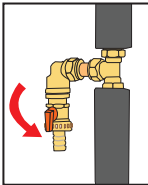
1



The control unit should be secured to the wall and connected according to the V200 Plumbing Installation Manual. Check that the panel sensor cable and cylinder sensor cable are connected to the corresponding sensor sockets (1, 11).



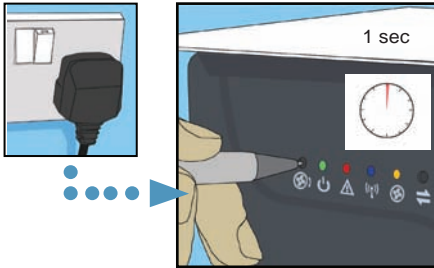
2



Unscrew the filling cap (2) on the drainback vessel (3). Open the fill level valve (4) and place a cup underneath the outlet to catch overflow.

Fill with water until it overflows from the fill level valve (4) then replace the filling cap (2) and close the fill level valve (4).

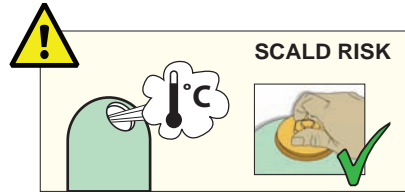
3



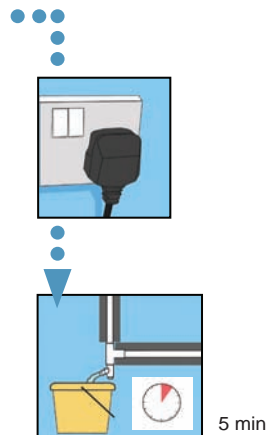
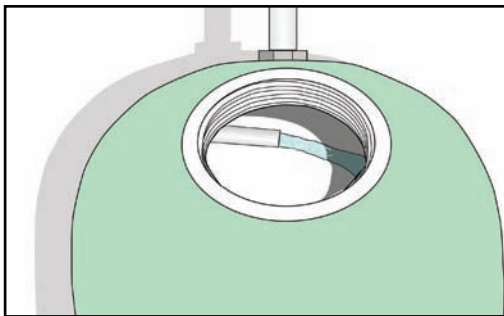
1	4 min	
+1	12 h	
+1	Automatic solar control	

Set the pump speed selector (6) to setting II. Switch on the power. The pump may start under automatic control, otherwise press the pump test button (7) and hold for one second to run the pump for 4 minutes.

Two pump test modes are accessible by pressing the pump test button (7). The mode is indicated by the number of flashes of the pump indicator light (10)



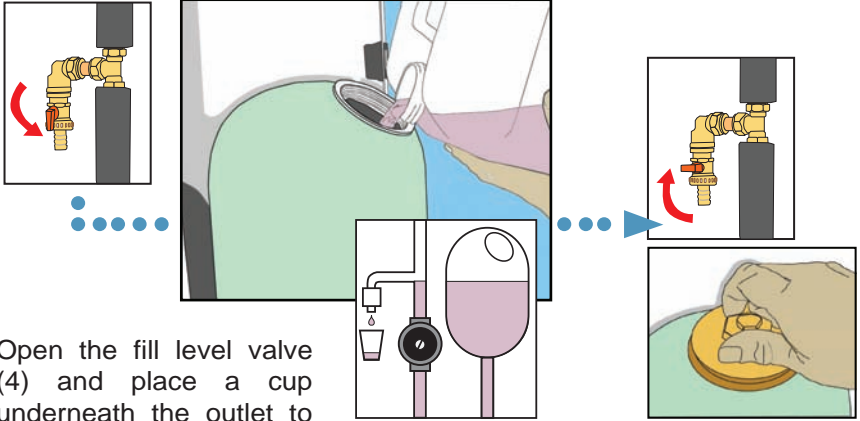
4



Listen for fluid return to the drainback vessel (3). If no flow check for air-lock in cylinder coil or try pump setting III.

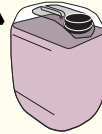
Once flow is seen, switch off power and drain the system fully.

5



Open the fill level valve (4) and place a cup underneath the outlet to catch overflow.

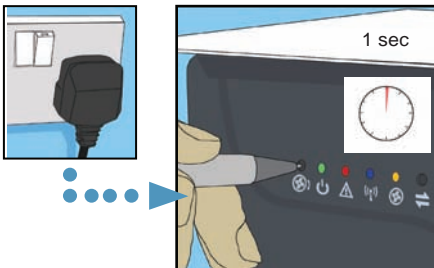
Fill with system fluid until it overflows from the fill level valve (4). Replace the filling cap (2), close the fill level valve (4).



USE ONLY VIRIDIAN SOLAR FLUID
Do not dilute

Code: V225

6



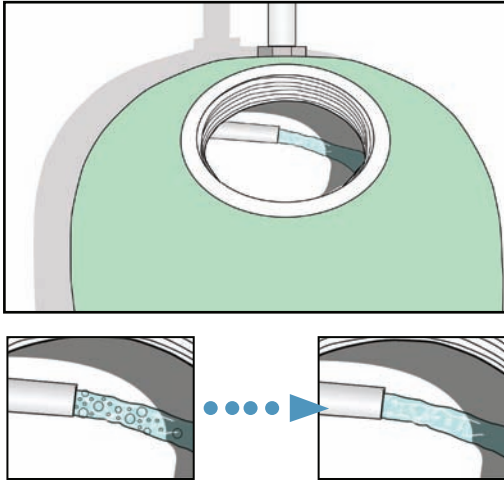
Switch on the power. Press the pump test button (7) and hold for one second to run the pump for 4 minutes.



SCALD RISK



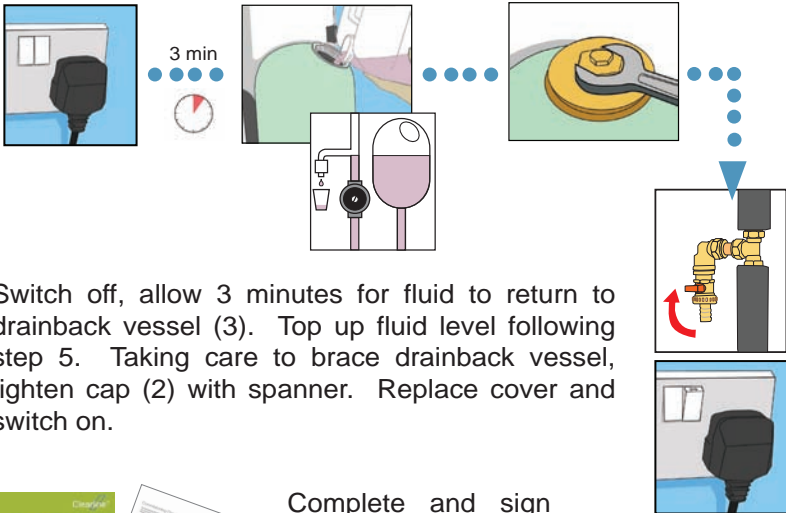
7



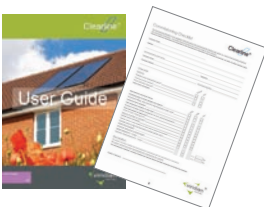
Listen for fluid return to the drainback vessel (3). If no flow check for air-lock in cylinder coil, try pump setting III.

Continue to run pump until flow is free of air bubbles. It may be necessary to press the test button (7) more than once.

8



Switch off, allow 3 minutes for fluid to return to drainback vessel (3). Top up fluid level following step 5. Taking care to brace drainback vessel, tighten cap (2) with spanner. Replace cover and switch on.



Complete and sign the Commissioning Checklist in the User Guide.

Error Messages



An error is indicated by the red light. The number of times the light blinks off per ten second period identifies the error.

Blinks per 10 sec.	Error	Remedial Action
1	Pump Error	Check pump, check for airlock or blockage
2	Cylinder Sensor Open Circuit	Reconnect sensor cable to controller
3	Cylinder Sensor Closed Circuit	Reconnect sensor cable to controller
4	Panel Sensor Open Circuit	Reconnect sensor cable to controller
5	Panel Sensor Closed Circuit	Reconnect sensor cable to controller
10	Microcontroller Error	Power down 10 seconds, then on again

Viridian Solar
Atlas Building, Stirling Way
Papworth, Cambridge.
CB23 3GY
T 01480 831 501
F 01480 831 831
www.viridiansolar.co.uk

