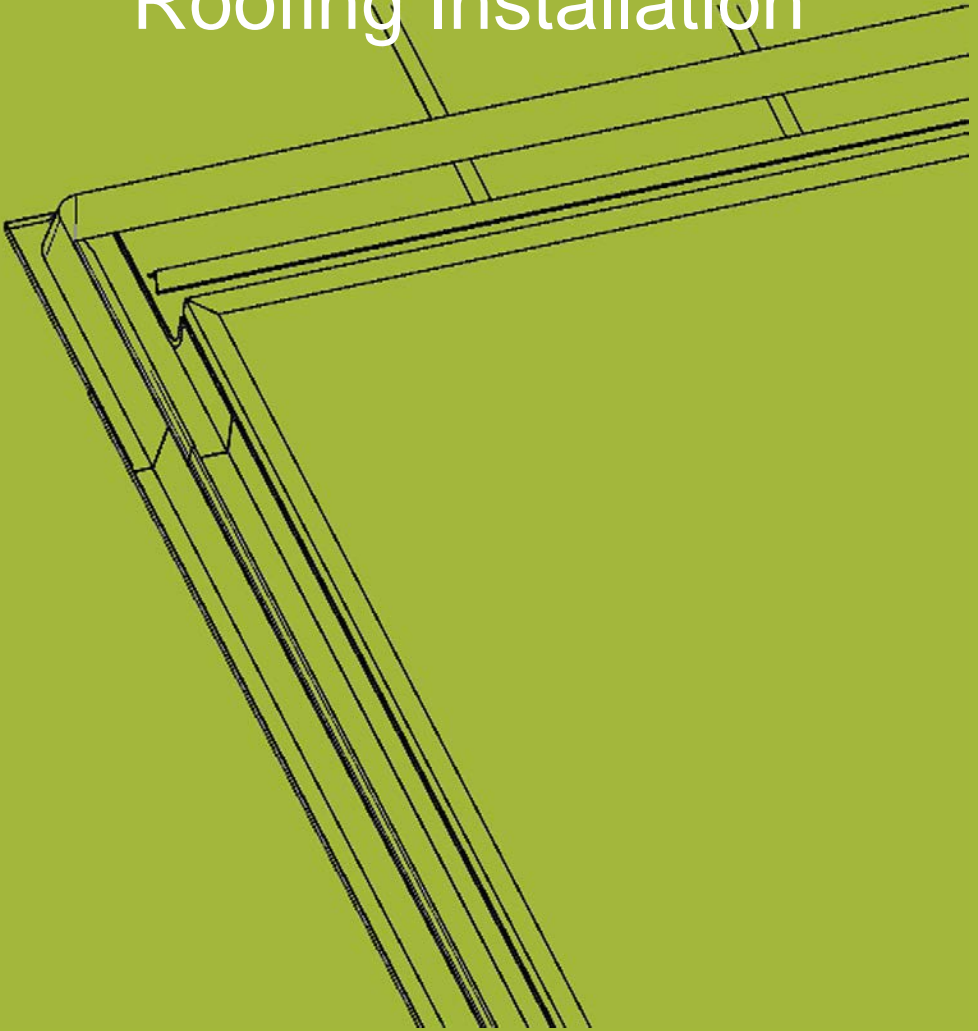
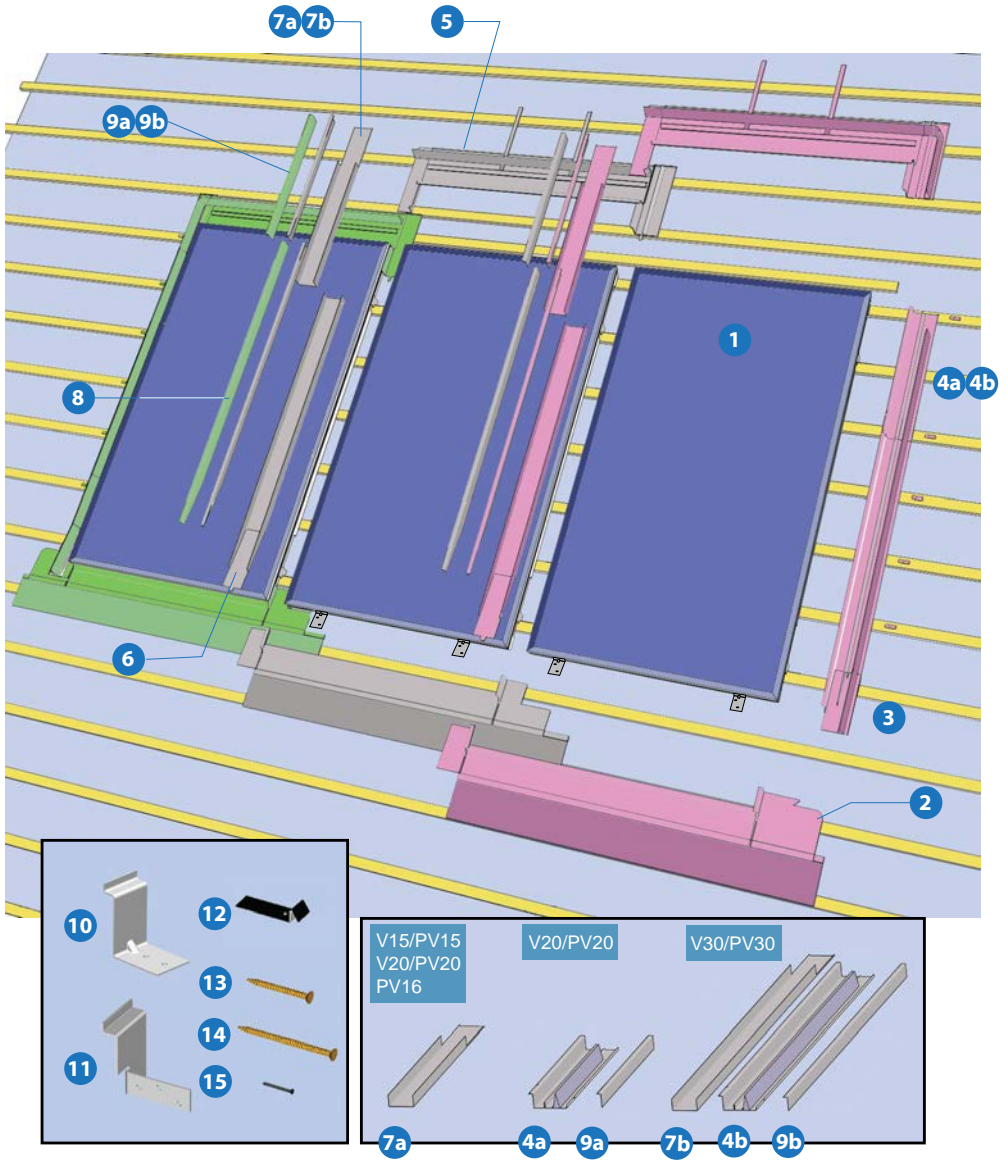
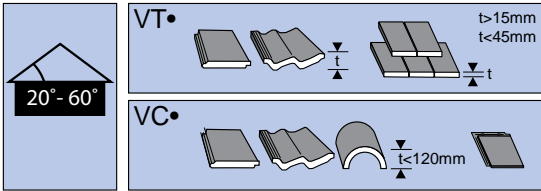


Roofing Installation







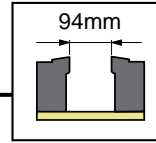
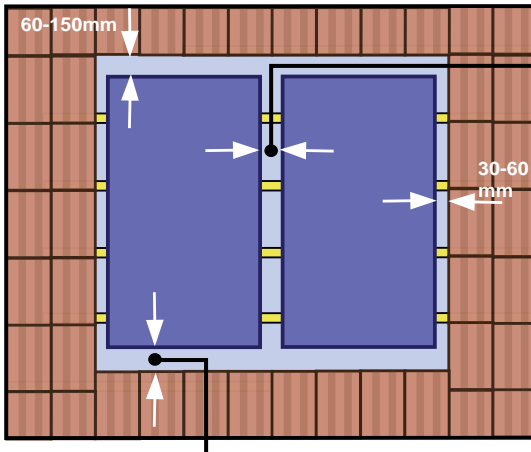
No.	Description	V•L	V•C	V•R	V•L16	V•C16	V•R16
1	Solar Panel						
2	Sill Flashing	1	1	1	1	1	1
3	Lower Side Flashing	1		1	1		1
4a	Upper Side Flashing (V20/PV20)	1		1			
4b	Upper Side Flashing (V30/PV30)	1		1			
5	Top Flashing	1	1	1	1	1	1
6	Lower Gutter		1	1		1	1
7a	Upper Gutter (V20,15/ PV20, 16, 15)		1	1		1	1
7b	Upper Gutter (V30/PV30)		1	1			
8	Lower Side Cover	1	2	1	1	2	1
9a	Upper Side Cover (V20/PV20)	1	2	1			
9b	Upper Side Cover (V30/PV30)	1	2	1			
10	Panel Rafter Bracket	4	4	4	4	4	4
11	Panel Side Bracket	6	6	6	4	4	4
12	Flashing Fixing Tab	9		9	6		6
13	4 x 25mm Screw	12	12	12	8	8	8
14	4 x 50mm Screw	8	8	8	8	8	8
15	25mm Nail	9		9	6		6



Viridian Solar recommends that the panel installation is carried out by an installer with roofing competence. The installation must comply with local regulations on lightning protection.

1

Setting out



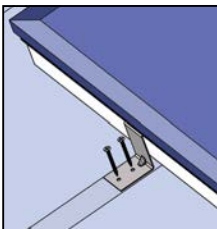
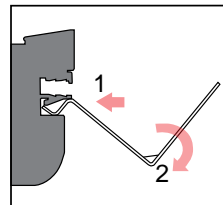
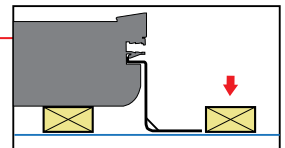
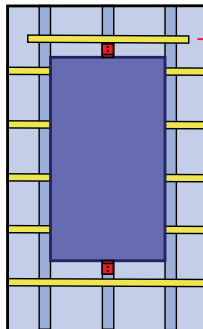
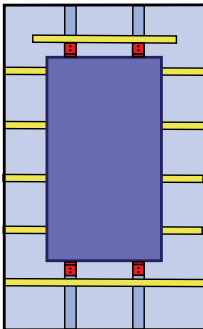
V15	31
V20	42
V30	62
PV15	29
PV16	21
PV20	40
PV30	56



Interlocking tiles set gap 130-150mm typical.
Reduce for thinner tiles, if unsure - contact us

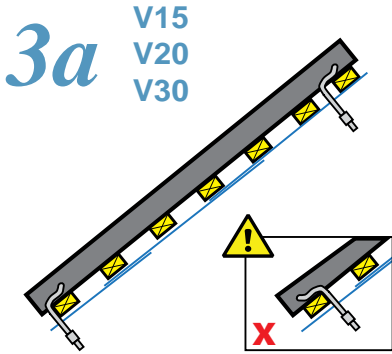
Use mechanical lift to roof height where possible

2

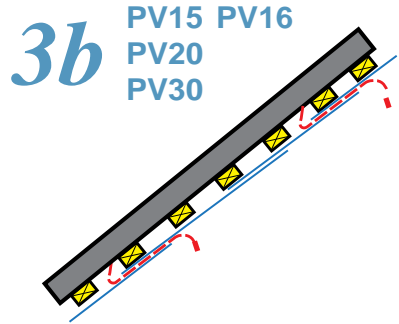


Fix panel with rafter brackets (10) at top and bottom with 2no. 50mm screws (14) per bracket. Depending on rafter location, use either 2 or 4 brackets.

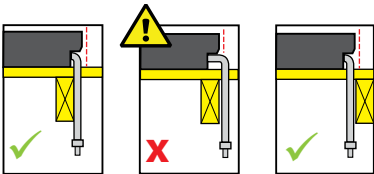
Fit support batten at top of panel.



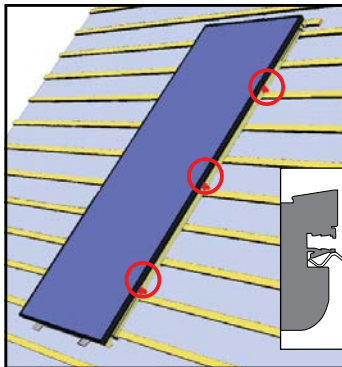
Position panel so hoses avoid rafters. Pass 2no. flexible hoses per panel through membrane. Tape around hose to seal membrane. Always take hose downhill.



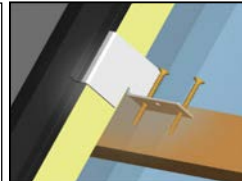
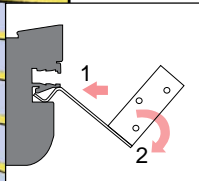
Feed 2 electrical connections per panel up between membrane laps and into the roof space behind.



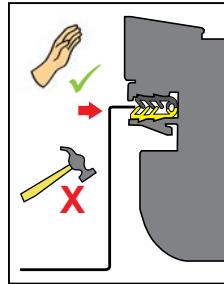
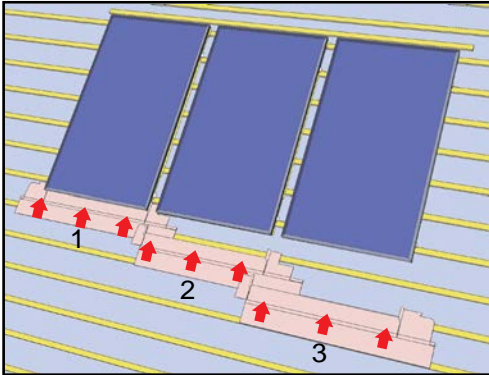
4



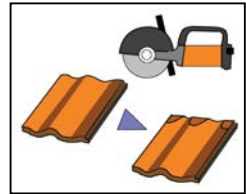
Attach panel side brackets (11) Use 3 each side for V30/PV30, 2 each side for other solar panels. Fix to battens using 2no. 25mm screws (12) per bracket.



5

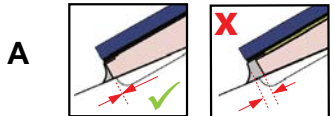
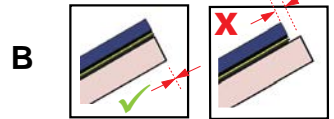
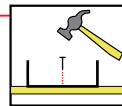
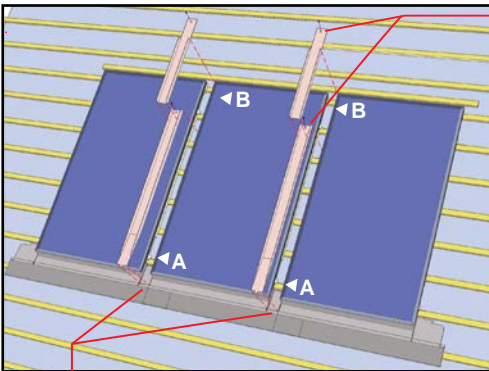


Starting from the left hand panel, carefully push sill flashing (2) into the rubber seal at bottom of panel. If lubrication is required, use soapy water.



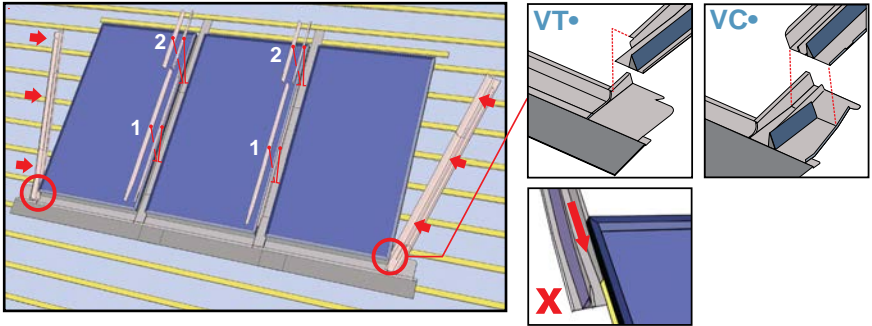
For some tile types it may be necessary to chamfer the high points under the sill flashing.

6



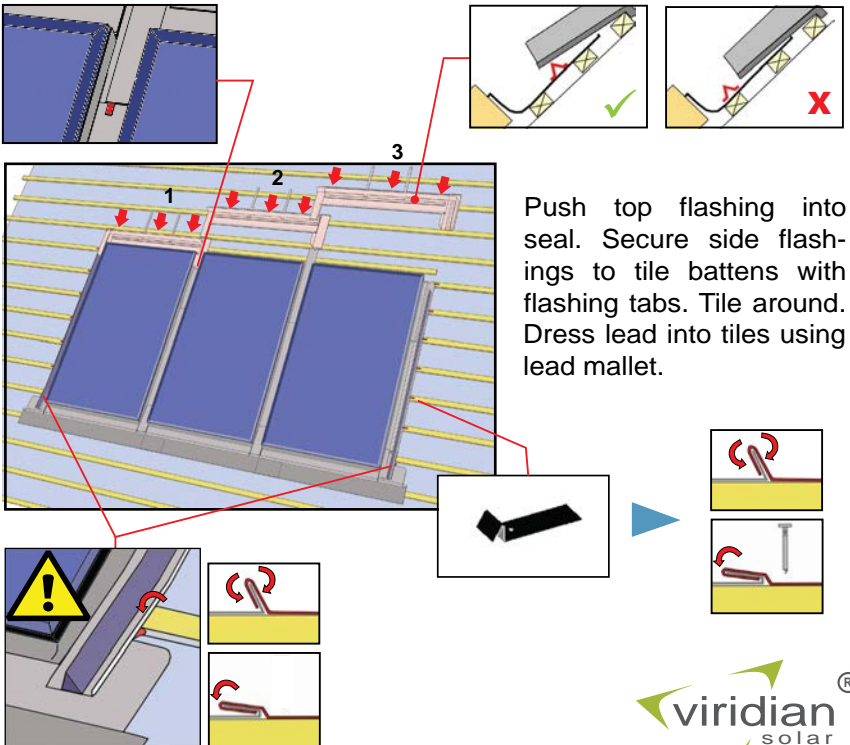
Fit gutters between the panels (6 then 7a or 7b), align carefully top and bottom. Fix with a nail at the top of each. Fold tab under sill flashing (2).

7



Join side flashings (3, 4) (V20, V30, PV20, PV30) using tabs provided. Push side flashings into side seal. Do not attempt to slide from top. Push lower side covers (8) into side seal. Push upper side covers (9) into seal (V15, PV15, PV16 - not required).

8



Push top flashing into seal. Secure side flashings to tile battens with flashing tabs. Tile around. Dress lead into tiles using lead mallet.

Clearline®

Viridian Solar
Atlas Building, 68 Stirling Way
Papworth, Cambridge.
CB23 3GY
T 01480 831 501
F 01480 831 831
www.viridiansolar.co.uk

